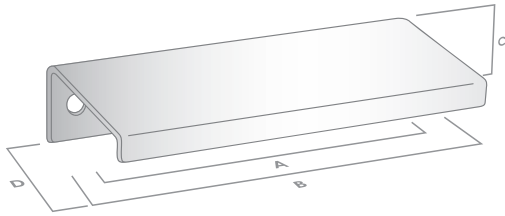


# LEDGE

## THE MINIMAL COLLECTION



### LEDGE PULL

FINISH	CODE	HC	L	W/D	P/H
Matt Black	099.030.04	-	30mm	20mm	35mm
Satin Stainless Steel	099.030.07	-	30mm	20mm	35mm
Matt White	099.030.25	-	30mm	20mm	35mm
Polished Stainless Steel	099.030.27	-	30mm	20mm	35mm
Satin Brass	099.030.35	-	30mm	20mm	35mm
Bronze	099.030.47	-	30mm	20mm	35mm
Matt Black	099.100.04	-	100mm	20mm	35mm
Satin Stainless Steel	099.100.07	-	100mm	20mm	35mm
Matt White	099.100.25	-	100mm	20mm	35mm
Polished Stainless Steel	099.100.27	-	100mm	20mm	35mm
Satin Brass	099.100.35	-	100mm	20mm	35mm
Bronze	099.100.47	-	100mm	20mm	35mm
Matt Black	099.200.04	-	200mm	20mm	35mm
Satin Stainless Steel	099.200.07	-	200mm	20mm	35mm
Matt White	099.200.25	-	200mm	20mm	35mm
Polished Stainless Steel	099.200.27	-	200mm	20mm	35mm
Satin Brass	099.200.35	-	200mm	20mm	35mm
Bronze	099.200.47	-	200mm	20mm	35mm

HC Hole Centres (A)  
 L Overall Length (B)  
 W/D Width or Diameter (D)  
 P/H Projection or Height (C)

### AVAILABLE FINISHES:



Matt Black



Satin Stainless Steel



Matt White



Polished Stainless Steel



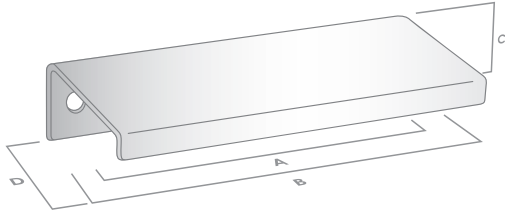
Satin Brass



Bronze

# LEDGE

## THE MINIMAL COLLECTION



### LEDGE PULL

FINISH	CODE	HC	L	W/D	P/H
Matt Black	099.300.04	-	300mm	20mm	35mm
Satin Stainless Steel	099.300.07	-	300mm	20mm	35mm
Matt White	099.300.25	-	300mm	20mm	35mm
Polished Stainless Steel	099.300.27	-	300mm	20mm	35mm
Satin Brass	099.300.35	-	300mm	20mm	35mm
Bronze	099.300.47	-	300mm	20mm	35mm
Matt Black	099.400.04	-	400mm	20mm	35mm
Stainless Steel	099.400.07	-	400mm	20mm	35mm
Matt White	099.400.25	-	400mm	20mm	35mm
Polished Stainless Steel	099.400.27	-	400mm	20mm	35mm
Satin Brass	099.400.35	-	400mm	20mm	35mm
Bronze	099.400.47	-	400mm	20mm	35mm

HC Hole Centres (A)  
 L Overall Length (B)  
 W/D Width or Diameter (D)  
 P/H Projection or Height (C)

### AVAILABLE FINISHES:



Matt Black



Satin Stainless Steel



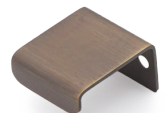
Matt White



Polished Stainless Steel



Satin Brass



Bronze